



# de Havilland

engineering group

# de Havilland

engineering group

The de Havilland Engineering Group comprises 4 specialist sectors, de Havilland - Fabrication & Welding, Alex Engineering, Chalford Skips including - Site Safety Equipment and our Water & Site Installations Division.



# de Havilland Engineering Group

Managing Director - Will Ryan

Director - Alan Ford (Commercial & Technical Lead)

SHEQ Manager - Lionel Rees

Alex Engineering

Utilities & site Installation

de Hav Fab & Welding

Chalford Skips

Contracts Manager - Tony Short

Project/Design Manager - Darren Letts

Machine Shop Manager  
Ben Bennett

Site Managers

Workshop Manager  
Tony Cook

Chalford Skip Manager  
Nigel Pearson

Machine shop Foreman

Site Supervisors

Fab shop Foreman x 2 shops

Skip shop Foreman

Millers & Turners

Pipe Fitters & Steel Erectors

Welders & Fabricators

Welders & Fabricators

Apprentices

Plant operators

Apprentices

Apprentices

# de Havilland

engineering group

## Health and Safety





# de Havilland

engineering group

## Quality (ISO 9001) & Environmental Management (ISO 14001)



# de Havilland

engineering group

## Quality (BS EN 1090)



Steel Construction Certification Scheme Limited  
4 Whitehall Court, Westminster,  
London SW1A 2ES  
Tel: +44 (0) 20 7699 3990  
Email: [accinfo@steelconstruction.org](mailto:accinfo@steelconstruction.org)  
[www.steelconstruction.org](http://www.steelconstruction.org)

### Welding Certificate 2273 – CPR – 0340– WC

In compliance with BS EN 1090-1:2009+A1:2011, table B.1, the following has been stated:  
This Welding Certificate is an annex to the Certificate of the Factory Production Control (FPC) 2273 – CPR – 0340.  
This Welding Certificate is only valid in conjunction with the aforementioned Certificate in the scope of the  
Regulation (EU) Statutory Instrument 2019 No 405 of the United Kingdom Parliament (The Construction Products  
(Amendment) etc.) (EU Exit) Regulation 2019) and the Construction Products (Amendment) etc.) (EU Exit)  
Regulations 2020.

**Manufacturer** de Havilland Fabrication & Welding Ltd

**Facilities of the Manufacturer** Unit 5, Stonehouse Commercial Centre, Bristol Road, Stonehouse  
Gloucestershire GL10 3RD

**Standard** BS EN 1090-2:2018

**Execution Class** up to EXC 3 according to BS EN 1090-2:2018

**Welding Process(es)** 135 – MAG welding with solid wire electrode

**Base Material(s)** 1.4301 (X5CrNi18-10), 1.4307 (X2CrNi18-9), 1.4401 (X5CrNiMo17-12-2),  
1.4404 (X2CrNiMo17-12-2) in accordance with BS EN 10088-2  
Up to and including S355J2 in accordance with BS EN 10025-2  
Up to and including S355J2H in accordance with BS EN 10210-1  
Up to and including S355J2H in accordance with BS EN 10219-1

**Responsible Welding Coordinator** Derek Pritchard – competence assessed by professional interview  
(up to and including EXC 2)

**Alternate** N/A

**Attestation** This certificate attests that all procedures for the execution and surveillance  
of welding works in connection with BS EN 1090-1:2009+A1:2011  
implemented.

**Date of first issue** October 2014

**Date of this issue** 03 August 2021

**Date of expiry** 02 August 2024

**Validity Period** This certificate will remain valid as long as neither the designated standard,  
the construction product, the AVCP methods, nor the manufacturing  
conditions in the plant are modified significantly, unless suspended or  
withdrawn by the approved factory production control certification body. This  
will be monitored regularly by Steel Construction Certification Scheme Ltd.  
Further clarification regarding the scope of this certificate and the  
applicability of the relevant UK designated standards requirements (see  
certificate of Factory Production Control) may be obtained by consulting  
Steel Construction Certification Scheme Ltd.



Chairman:  
Dr S Pika  
MIMM C Eng



Director of Certification:  
Dr S Pika  
Cip 188329-Inv Dip 184329-OMOSH ACP



Steel Construction Certification Scheme Limited  
4 Whitehall Court, Westminster,  
London SW1A 2ES  
Tel: +44 (0) 20 7699 3990  
Email: [accinfo@steelconstruction.org](mailto:accinfo@steelconstruction.org)  
[www.steelconstruction.org](http://www.steelconstruction.org)

### Certificate of Factory Production Control (FPC) 2273 – CPR – 0340

In compliance with Regulation (UK) Statutory Instrument 2019 No 405 of the United Kingdom Parliament (The  
Construction Products (Amendment) etc.) (EU Exit) Regulation 2019) and the Construction Products (Amendment  
etc.) (EU Exit) Regulations 2020, this certificate applies to the construction product(s)

Structural Components for Steel Structures		
UK Designated Standard	Type / Execution Class of the Construction Product	Declaration Method
BS EN 1090-1:2009+A1:2011	Load bearing and welded structural steel components up to EXC 3 according to BS EN 1090-2:2018	1, 2, 3a and 3b table A.1 of BS EN 1090-1:2009+A1:2011

placed on the market by  
**de Havilland Fabrication & Welding Ltd**  
and produced in the factories  
Unit 5, Stonehouse Commercial Centre, Bristol Road, Stonehouse, Gloucestershire, GL10 3RD

is submitted by the manufacturer to the initial type-testing of the product, a factory production control and to the  
further testing of samples taken at the factory in accordance with a prescribed test plan and that the Approved  
Body No. 2273 – Steel Construction Certification Scheme Ltd, has performed the initial inspection of the factory  
and of the factory production control and performs the continuous surveillance, assessment and approval of the  
factory production control.

**Attestation** This certificate attests that all provisions concerning the attestation of factory  
production control described in Annex ZA of the designated standard  
BS EN 1090-1:2009+A1:2011 were applied.

**Date of first issue** October 2014

**Date of this issue** 03 August 2021

**Date of expiry** 02 August 2024

**Validity Period** This certificate will remain valid as long as neither the designated standard,  
the construction product, the AVCP methods, nor the manufacturing  
conditions in the plant are modified significantly, unless suspended or  
withdrawn by the approved factory production control certification body. This  
will be monitored regularly by Steel Construction Certification Scheme Ltd.  
Further clarification regarding the scope of this certificate and the applicability  
of the relevant UK designated standards requirements (see welding  
certificate) may be obtained by consulting Steel Construction Certification  
Scheme Ltd.

To confirm the validity of this certificate, please click on the following link [www.steelcertification.co.uk](http://www.steelcertification.co.uk)



Chairman:  
Dr S Pika  
MIMM C Eng



Director of Certification:  
Dr S Pika  
Cip 188329-Inv Dip 184329-OMOSH ACP

# Background

Founded in 1991, De Havilland Engineering Group specialise in fabricating and welding pipework, steelwork and mechanical engineering projects for the water and utilities industries, delivering high quality installations within programme, on budget and manufactured to the highest engineering standards, which in turn are implemented within our ISO9001, ISO14001, Achilles Verify and UKCA management procedures and accreditations.

## Mechanical installations

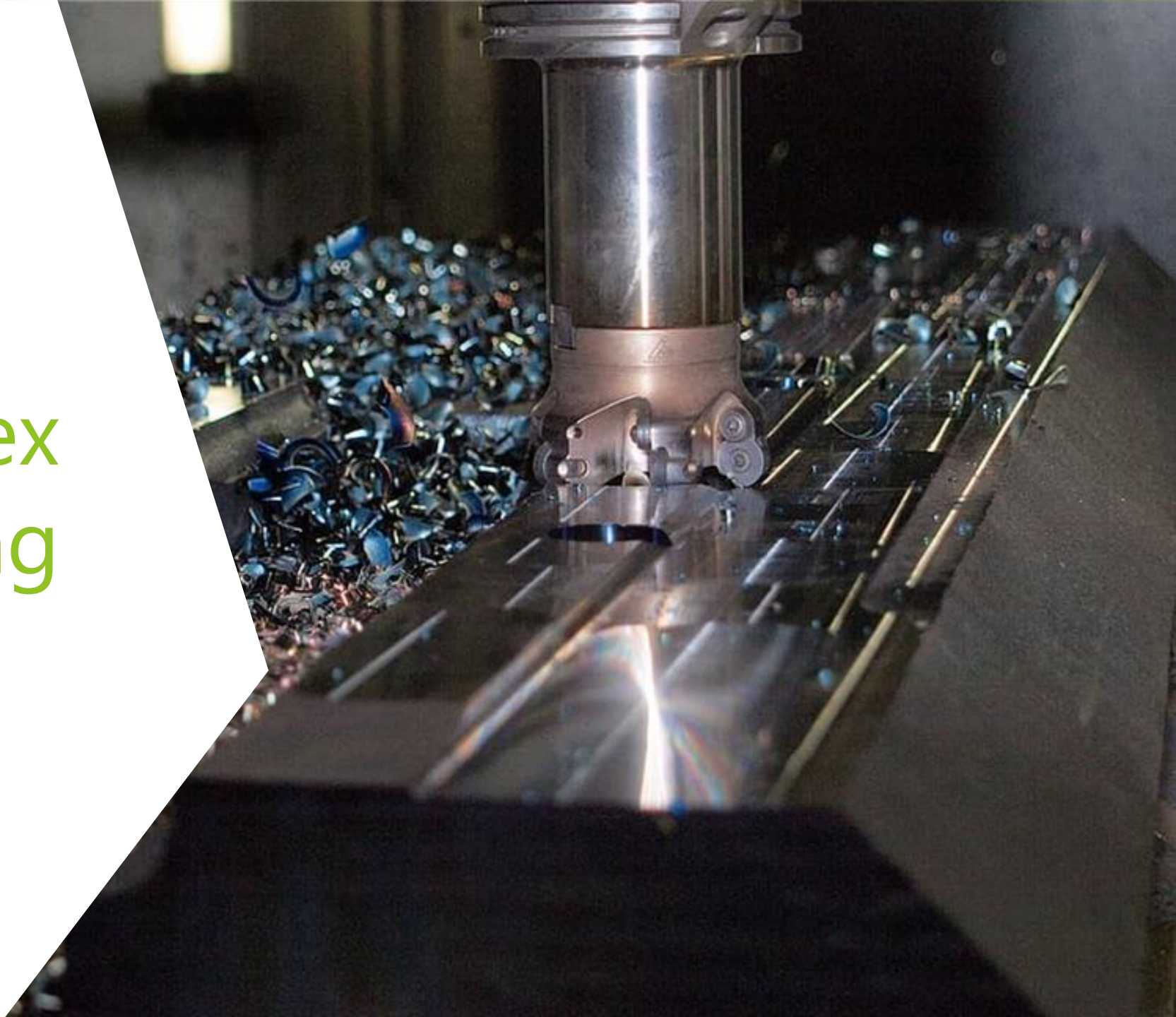
As a specialist company working within the water and utilities industries, we offer a full range of services from in-house design, fabrication and installation, to commissioning of all aspects of industrial pipework and steelwork packages to match our client's demanding standards and specifications. We also manufacture bespoke fabrications.

With contract expertise in the UK and Europe, we have undertaken major projects ranging from £5,000.00 to £1.5m+. These include Water Treatment plants, Sewage treatment plants, food & beverage industry and power stations. Another area of our expertise is the design and installation of Chemical dosing systems, pipework systems, access and walkway structural steelwork across all sites.

We are highly skilled in fabricating pipework systems using a range of materials such as stainless steel, Epoxy coated mild steel pipework, copper pipework and PVC glued electrofusion welded systems.

Our 15,000 Sq Ft fabrication workshop is equipped with 2 overhead, 5 tonne cranes. We have also just extended the potential of our fully equipped machine shop with two new Hurco CNC operated lathe and milling machines.

# Alex Engineering

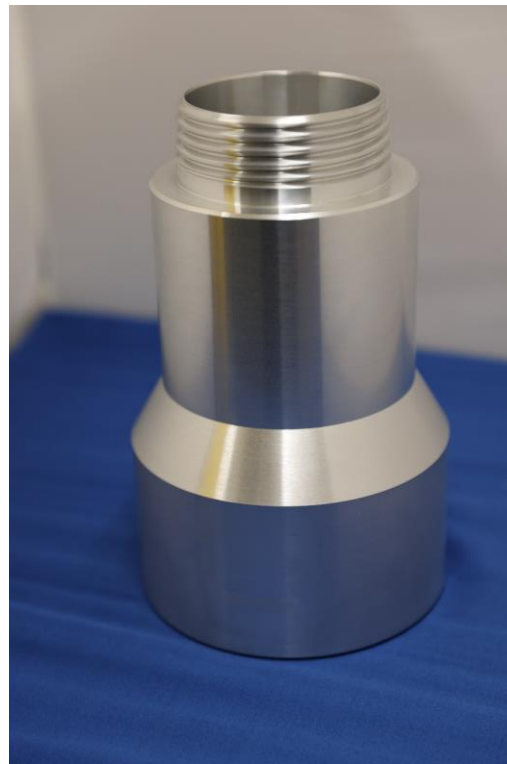
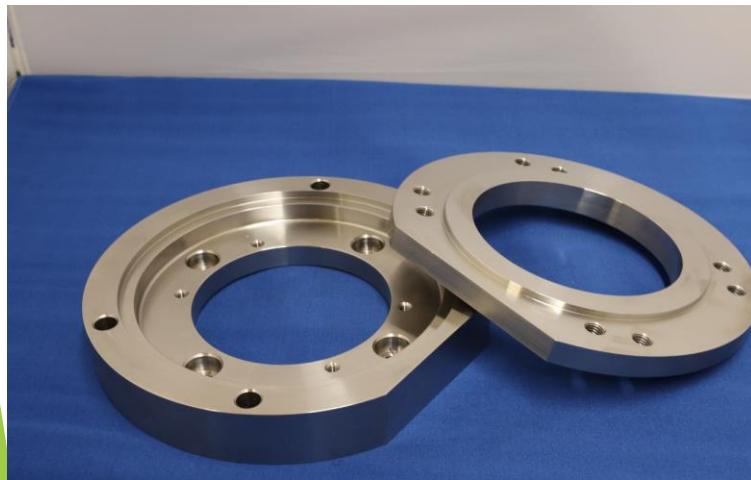
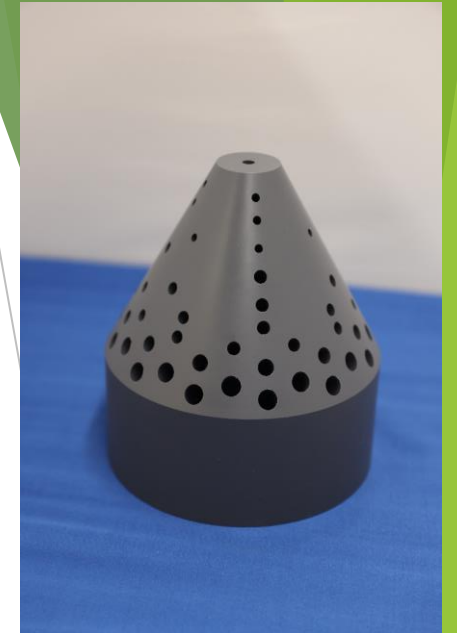
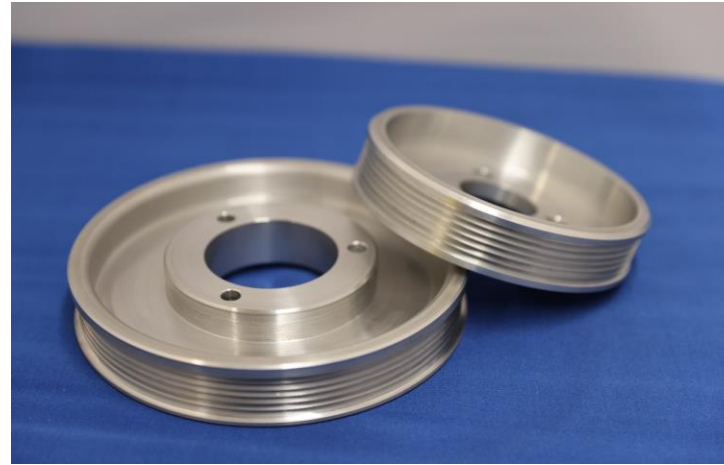




# Precision Engineering Capabilities

- ▶ With the acquisition of two brand new state of the art Hurco CNC operated machines last year, we have an even faster turnaround of precision parts to customers.
- ▶ The tight tolerance pieces are also easier to now achieve.
- ▶ We have an array of machines capable of doing most material specs, which allow us to do the more complicated and difficult parts.
- ▶ The turning capabilities allow us to produce parts up to Ø400.0 m/m x 2.40 metres long.
- ▶ We can manufacture turned parts from an R & D 1 off to batches of 900 off, thanks to the bar feeder on our new lathe.
- ▶ Our C.N.C. Mills can handle parts up to 1.00 metre long x 450.0 m/m wide
- ▶ The investment in new inspection equipment allows us to 100% check all of our parts before delivery.
- ▶ Our present customers are from the Oil and Gas Industries, Hydraulic Pump Manufacturers, Marine Engines, Press Tool Manufacture and Hydraulic & Pneumatic OEM's

# Machined Components





# Fabrication & Welding

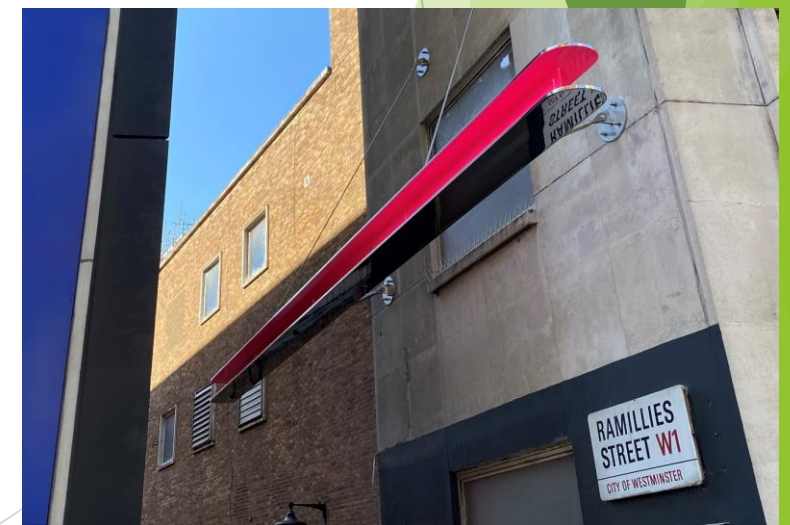
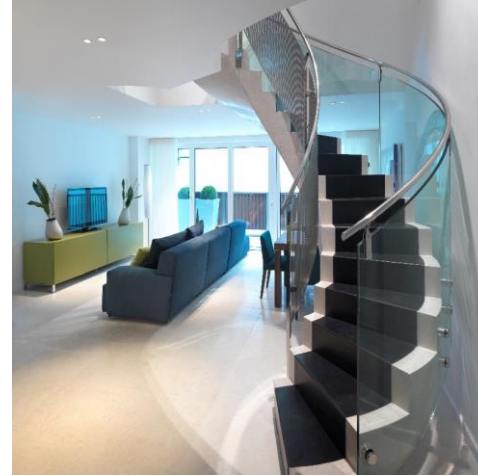


# Fabrication & Welding Capabilities

- ▶ de Havilland provide most manufactured installation structures for site, including pipework, silo's, hoppers, platforms and bespoke requests specific to each project.
- ▶ Fabrication workshops set in approx. 15,000sq feet, with segregation for ferrous and non ferrous materials.
- ▶ Structural steelwork up to Execution class 3 (UKCN) Including bridges
- ▶ All Galvanising carried out to EN ISO 1461
- ▶ Heritage restoration work
- ▶ Design (2D/3D Modelled)
- ▶ Pipework fabrications – Carbon, STST, PVC, GALV, PE (Onsite / Off site)
- ▶ Offsite skid building (UV / Boll filters / Dosing cabinets Etc)
- ▶ 2 x 5 Ton internal Cranes
- ▶ Professional painting and coating facility
- ▶ Staircases and balustrades
- ▶ Chemical dosing skids
- ▶ Specialist materials include Duplex, Hastelloy, Aluminium, Brass, Copper, Inconel, Bronze & Abro 400



# Fabrications





# Site Installations



# Site Installations

- ▶ Our site installation division is assembled from a set of highly skilled mechanical engineers from within the industry and set about delivering high quality installation and service projects on time and within budget.
- ▶ The company undertakes all it's mechanical installation projects to the highest standards of health and safety.
- ▶ We seek to ensure that all our engineers are up-to-date with site certification, training and safety passports:
- ▶ E.C.I.T.B. (Engineering Construction & Industry Training Board) Health & Safety Passports to Supervisor Level.
- ▶ C.C.N.S.G. (Client Contractor National Safety Group) Safety Passports to Supervisor Level
- ▶ C.S.C.S (Construction Skills Certification Scheme)
- ▶ Slinger & Signalling / Banksman's Certificate
- ▶ Fork Lift / Tele Handler Truck Licence
- ▶ M.E.W.P. (Mobile Elevated Work Platform - both scissor lift & telescopic boom)
- ▶ First Aid
- ▶ Blue Card for access to clean water board sites, PASMA Access Tower Erection & Confined Spaces Training.
- ▶ Annual full Medical for operating plant and entering confined spaces
- ▶ We also have a team of PMs along with SMSTS training
- ▶ Site supervisors carry SSSTS training cards

# Completed projects





# Chalford Skips & Site Safety



# Chalford Skips & Site Safety

- ▶ Chalford Skips, specialise in manufacturing fork lift truck tipping skips & attachments for the construction & industrial markets. Situated in Stroud, Gloucestershire we supply tipping skips & site safety equipment internationally.
- ▶ With a customer base of over 1,200 clients we supply all major home builders & many large manufacturers with our tipping skips, crane access and work platforms, gas bottle cages, cycle racks & other site safety products. We pride ourselves on supplying an extremely high quality product at a competitive price, and can normally offer a next day delivery service to most of the UK.
- ▶ With an expanded range of fork lift truck/ telehandler tipping skips that now includes sizes from 0.5 YD to 3.0 YD, we have now launched our 1 man and 2 man Crane Access Platform and the Chalford Mini skip as well as a new 6 and 12 cycle bike rack and a single bike stand - either floor standing or wall mounted.
- ▶ Other size skips can be made to your requirements.
- ▶ We are also looking at increasing our range of Site Safety Equipment, including new heavy duty fork extensions. Watch this space for more details.
- ▶ Site visit inspections to service and repair damaged skips
- ▶ Recently launched range of autolocking skips for Telehandlers

# Some of our customers.....





